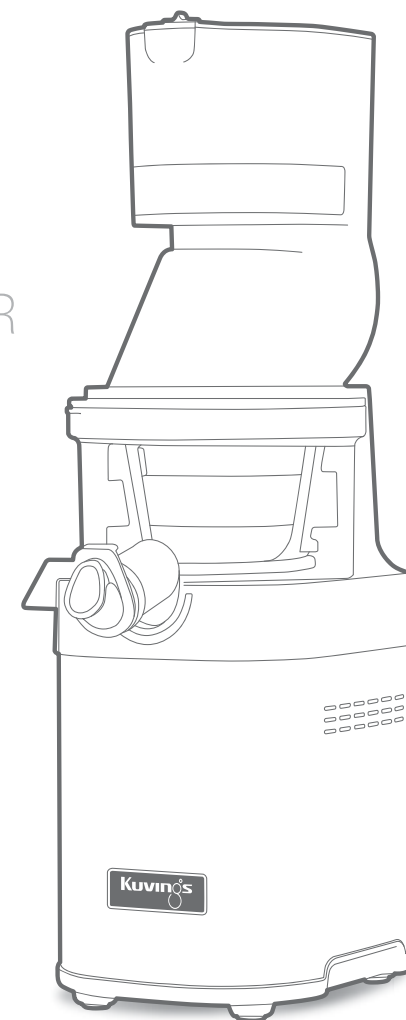




KUVINGS
WHOLE SLOW JUICER
***Chef* MANUAL**

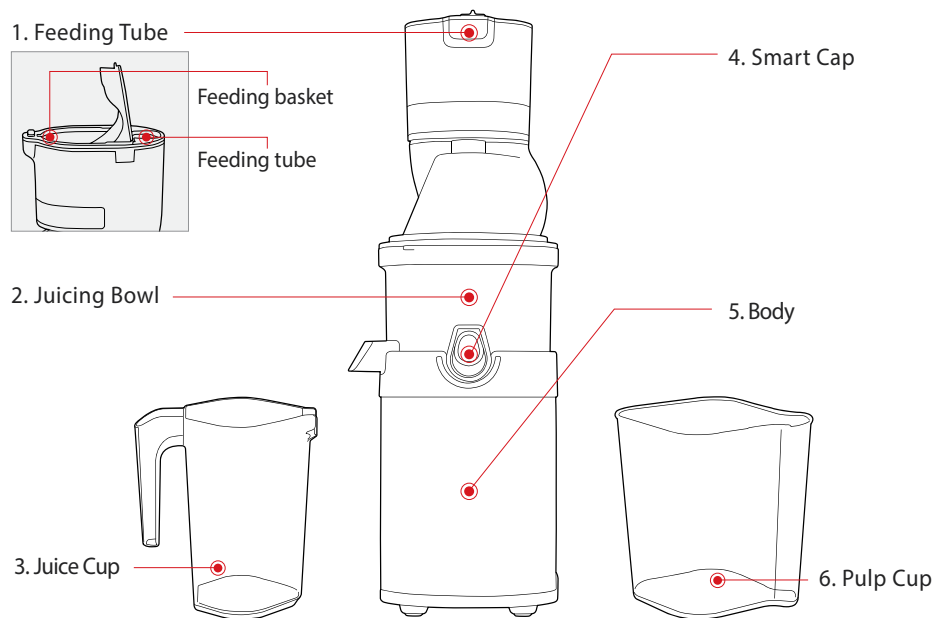
- After you read this manual, keep in the place you can reach easily.
- These instructions shall also be available in an alternative format, e.g. on a website.
<http://www.kuvings.com>



PARTS

*The products illustrated in this booklet may vary slightly from the actual product.

*The products illustrated in this booklet may vary slightly from the actual product.



7. Rotation Wiper



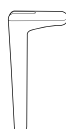
8. Strainer



9. Juicing Screw



10. Pusher



11. Cleaning Brush



12. Rotating Brush



13. Round Brush



STEP 1

Drum Set Assembly

Align the red dots ● on each part and assemble in the order shown. Once assembled, turn the drum lid clockwise to close.

STEP 2

Drum Set and Body Assembly

Place the drum lid on the juicing bowl. Align the down arrow ▼ on the drum lid with the ◻ OPEN mark on the body and turn to the ◼ CLOSE position.

SPECIFICATIONS

Product	Juicer
Model	CS600CE, CS600CB, CS600SA
Voltage	AC220-240V, 50/60Hz
Power Consumption	200W
Weight	9,1kg
Dimension	260 x 183 x 515 (mm)
Manufacturer	NUC Electronics Co., Ltd.
Type	Low Speed Compression
Origin	Made in Korea

